

**ASTRO • S-10 BLAZER • S-10 PICKUP • CHEVY VAN • SPORTVAN
FULL-SIZE PICKUP • FULL-SIZE BLAZER • SUBURBAN • EL CAMINO**

1985 CHEVY TRUCKS



CHEVY TRUCKS

MEETING AMERICA'S TRUCKING NEEDS.

Perhaps it was a young suburban couple taking delivery of their sporty S-10 Blazer. Maybe it was an Iowa farmer purchasing his most recent full-size Chevy Pickup 4x4 — from the

same Chevy dealer he's been trading with for 25 years. Possibly it was a big-city fleet owner buying another Chevy Van to handle a recent surge in sales. Someone, somewhere in

America, sometime late in 1983 bought the 25 millionth Chevy truck.*

Chevy offers a full line of light-duty trucks, tough and versatile enough to meet virtually all of

America's trucking needs. With more than 25 million sold in the past seven decades, it's not surprising that Chevy trucks have become a part of the fabric of American life and com-



merce. For three and a half decades there have been more Chevy trucks in use than any other make.†

This year the fleet is led by Chevy's newest superstar — Astro. Astro is

a new kind of automotive concept. With its contemporary good looks, functional versatility and convenient size, Astro offers consumers a buying alternative that combines

impressive spaciousness with carlike comfort. It's an important new dimension to the Chevy truck leadership story, a proud tradition that stretches back more than 70 years.

*Source: Chevrolet Division reported retail deliveries in the U.S., 1912 through September 30, 1983.

†Source: R. L. Polk & Co., July 1 census, 1948-1983.



CHEVY ASTRO

A NEW ERA IN SPACE TRAVEL.

Welcome aboard Astro, the van that introduces a new way to use space.

Everything about Astro is new. This is an automotive concept offering an optimum level of design and versatility. Chevy's new-size Astro merges van convenience with station-wagon comfort and driving ease.

Despite the boldness

of Astro's approach to transportation, this space machine boasts room for eight passengers (when available seating is added to the passenger model), 5,000-lb. towing capability (when properly equipped) and 151.1-cu.-ft. cargo capacity (with rear seats removed), all in a garageable vehicle that's smaller and lighter than a conventional short-wheelbase van.

Plus, Astro offers a variety of powertrain combinations: a 4-cylinder electronically fuel-injected 2.5 Liter engine is stan-



CL Interior in Saddle Tan with optional reclining front buckets, standard second, available rear seats.



dard; the nimble performance of the 4.3 Liter V6 Vortec engine is available. Either engine can be paired with the standard 4-speed manual or the available 4-speed automatic overdrive or 5-speed manual overdrive transmissions.*

Open any one of the five doors and you'll find comfortable seating, handy storage compartments, and your choice of standard, CS or CL levels of interior trim.

Climb aboard, and you'll understand why after Astro, space travel will never be the same.



Astro Special Two-Tone in Summit White and Teal Blue Metallic.



You're in business. You've got a schedule to meet, a job to get done.

Chevy's new commercial-version Astro promises to make your work a lot easier.

Here is a vehicle that not only looks good, it's eminently useful, with features that enhance its ability to master a wide variety of tasks.

Rear drive, for one. Astro engineers determined that a vehicle like Astro needs the payload capacity, even weight distribution and engine-forward design made possible by a rear-drive configuration.

A choice of three payloads, for another. Whether you choose the 1,000-, 1,350- or 1,700-lb. capacity, all are unaffected by the addition of optional equipment.

And then there's Astro's ease of access. The wide-swinging rear panel doors allow you to open the back even with a ladder on the roof. The sliding side door is designed for one-handed operation. Even the front doors, which tilt out at the tops when opened, facilitate movement in and out of the van.

Once you're inside, Astro offers 88.9" of cargo length behind the driver's seat and 51.6" of width between wheel wells. There's 4 feet of interior walk-through height.

Add 15" all-season M + S-rated (Mud and Snow) steel-belted radial tires, comfortable seating and contemporary instrumentation, all standard on Astro, and you have a vehicle that's sure to become an important tool of your trade.

Astro CL Sport Two-Tone in Sterling Silver Metallic and Gray Metallic.

* Available May 1985.

S-10 PICKUP 2WD AND 4x4

AMERICA'S IDEAL PICKUP.

Ideal for work. Ideal for fun. Chevy S-10 is America's ideal pickup because it offers what you want in a truck — skilled engineering, quality assembly, compact proportions and year-in-year-out driving ease.

S-10 allows you to order the pickup you need: Choose 2WD or 4x4, long or short cargo box, regular or Maxi-Cab, gas or diesel engine, new 2.5 Liter elec-

tronically fuel-injected L4 (std. in 4x4, Maxi-Cab and most California models) or spunky available 2.8 Liter V6 power, manual or automatic transmission.

If your 2WD S-10 Pickup is a work truck, check out these job qualifications: 1,625-lb. payload capacity including passengers and cargo (when the vehicle is properly equipped) and towing capability, including trailer and cargo, of up to 5,000 lbs. (Requires V6 engine and Heavy-Duty Trailing Package.)

If off-roading is your pleasure, every S-10 4x4 comes with the patented Insta-Trac system; an available Off-Road Package featuring Delco/Bilstein gas-pressure shocks makes S-10 ride smoothly mile after off-road mile.

And if additional in-cab space is what you need, choose Maxi-Cab, with 18.4 cu. ft. of in-cab stowage. Add available fold-up rear jump seats and Maxi-Cab seats four.



Sport interior with available High Country Sheepskin bucket seats.



S-10 Maxi-Cab 4x4 Sport in Desert Sand and Satin Black.

Tires supplied by various manufacturers.

S-10 BLAZER 2WD AND 4x4

TRUCK-TOUGH. PRACTICALLY BEAUTIFUL.

S-10 Blazer is the most popular vehicle of its kind in America. A dynamic combination of truck-tough ruggedness and civilized versatility, this vehicle does the things a truck has always done, and with a fashionable sense of style.

Under the hood there's power to go almost anywhere, provided by either this year's new standard 2.5 Liter L4 electronically fuel-injected engine or by the gutsy available 2.8 Liter V6. And with S-10 Blazer you select the powertrain you want: Manual or automatic transmissions can be attached to either a station-wagon-handly 2WD Blazer or the brawny 4x4. Standard in every Blazer 4x4 is Insta-Trac, the patented 4x4 system that allows shifting from 2WD to 4WD High and back at any speed.



Inside, every S-10 Blazer is an experience in wide-open comfort. The full-foam cushioned high-back front bucket seats provide 42.5 inches of leg room. Spacious accommodations for two additional adults are available when you order the available rear bench seat. If cargo capacity is what you need, S-10 Blazer provides 28.1 cu. ft. of space behind the rear seat and a full 67.3 cu. ft. of stowage when the rear seat is folded down.

S-10 Blazer Tahoe 4x4 Custom Two-Tone in Apple Red and Midnight Black.

Tahoe interior in Carmine Red.

FULL-SIZE PICKUP

AMERICA'S STRONG RIGHT ARM.

They're everywhere. Hauling seed and fertilizer on farms and ranches. Doing yeoman's duty on big-city construction sites. Hauling trailers, boats and campers for vacationers. From coast to coast, full-size Chevy Pickups are America's strong right arm.

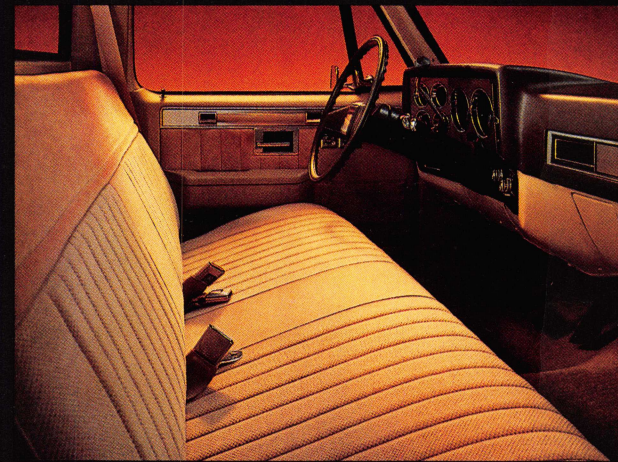
Chevy Pickups come

in a wide range of choices, including 1/2-, 3/4- and 1-ton series, with long or short cargo boxes; Fleetside or Stepside styling; Crew Cab or Bonus Cab models, and 2- or 4-wheel drive. Increased engine power is standard this year with Vortec, the new 4.3 Liter V6 that generates nearly 35% more horsepower and as much as 15% more torque than the engine it replaces. Full-size Chevy Pickups also offer the proven 6.2 Liter V8 Diesel engine —

the most popular truck diesel in America over the last three years* — on every single model in the line.

With these and many other tough and tested features going for them, it's no wonder these full-size pickups have been Chevy's most popular trucks for the last 50 years combined.

*36-month period ending 5/30/84.



Silverado interior in Saddle Tan Custom Cloth.



1965 C20 in Red. C10 Silverado Custom Two-Tone in Doeskin Tan and Apple Red.

Tires supplied by various manufacturers.



EL CAMINO TOUGH BEAUTY.

Head-turning style. Hard-working performance. There's plenty of both built into El Camino. This is a tough beauty filled with creature comforts that really likes to truck.

In addition to its traditional features — automatic transmission, power steering, air adjustable rear

shocks, notchback seat with armrest, color-keyed cut-pile carpeting — El Camino boasts a new 4.3 Liter V6 engine for 1985. Available in standard, Conquista and SS Sport Decor models, every El Camino is ready for work — with a payload capacity of 1,250 lbs., including passengers and cargo — or for fun — with towing capability including trailer and cargo of up to 6,000 lbs., when properly equipped. The choice is up to you.



El Camino in Black.

El Camino interior in Blue cloth with reclining bucket seats.



FULL-SIZE BLAZER BACK- COUNTRY ROUGHNECK.

Bring on the back country. Chevy's full-size Blazer 4x4 is a trail-climbing roughneck that really rawhides through the rough stuff.

Blazer Silverado 4x4 in Apple Red with Frost White top.

Whether you select the 5.0 Liter V8 gasoline (5.7 Liter V8 in California) or the 6.2 Liter Diesel model, Blazer is equipped to conquer almost any type of terrain. And here's a real advantage: The available automatic hub/synchronized transfer-case system allows you to shift this vehicle from 2WD to 4WD High at speeds up to 25 MPH without stopping. This advanced action-traction system also transforms the vehicle into a 2WD street cruiser ready to take on the town. With available seating for five, plus capacity to carry 800 lbs.* of their gear, Blazer is one tough package of versatility and fun.

*1,688 lbs. total gross payload including driver, passengers, equipment and cargo.

CHEVY SUBURBAN

POWER TO TOW, ROOM TO GO.

Suburban is the tough truck-wagon that combines interior comfort and room for up to nine passengers (in available seating) with the same type of rugged frame and double-wall construction built into 1/2- or 3/4-ton full-size Chevy Pickups.

The result is a vehicle that packs in up to 165 cu. ft. of cargo when available rear seats are removed. Properly equipped, Suburban can move trailer, passengers and cargo weighing up to 9,500 lbs.

In its available 4x4 version, Suburban really shows its grit. Featuring a remarkable available 4WD system, this eager back-roader allows nonstop shifting at speeds up to 25

MPH from 2WD to 4WD High. Mobility like that is a real advantage.

Part of the key to Suburban's versatility is its muscular V8 powerplant. A 5.0 Liter V8 engine is standard (not available in California); choose a brawny 5.7 Liter or the hefty 7.4 Liter mill if more power is what you need. Chevy's popular 6.2 Liter V8 Diesel is also available on every Suburban model in the line.



Silverado interior in Saddle Tan with available seats.



C10 Suburban Silverado with Exterior Decor Package in Apple Red and Doeskin Tan.



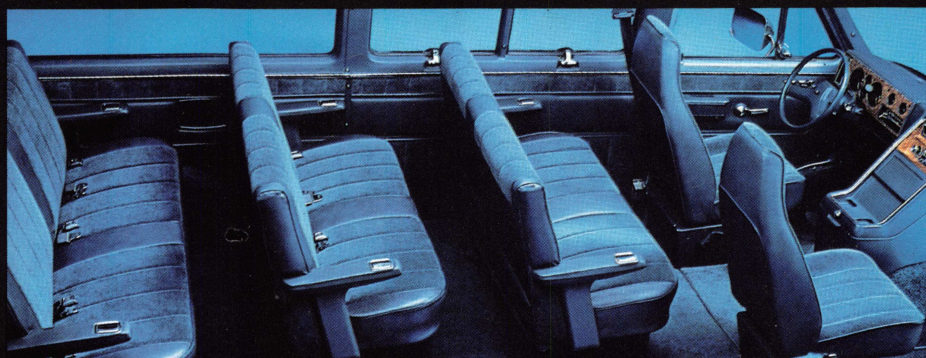
SPORTVAN & CHEVY VAN

AMERICA'S ALL-PURPOSE VANS.

Sportvan is Chevy's all-purpose people-carrier. Built high, wide and handsome, this van boasts seating capacity, when available rear benches are added, for up to twelve in the G30 model, shown above. There's room for bag and baggage, too; even with a dozen passengers, G30 Sportvan stows 40.5 cu. ft. of luggage behind the optional rear seat. For

those with more modest needs, Sportvan is also available in G10 and G20 models. G10 and G20 Sportvan offers standard seating for five; with an optional bench added, G20 carries as many as eight.

As America's business partner, Chevy Van (not shown) is the vehicle big corporations and small companies depend on. Combining rugged body and chassis engineering with abundant payload capacities, Chevy Van in the 125-inch-wheelbase model offers load length that stretches a full 174.7 inches without the optional passenger seat. With load width of nearly 6 feet, Chevy Van packs in the



tools of your trade with plenty of room to spare.

Both Chevy Van and Sportvan feature the Vortec, a new 4.3 Liter V6 engine that's standard for 1985. Both are available with 6.2 Liter Diesel power. And both vehicles offer

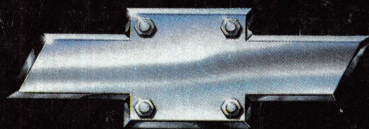
either no-extra-cost 60/40 swing-out side doors; you choose the access that's most convenient for you.

Shown above: G30 Beauville Sportvan with Exterior Decor Package in Galaxy Blue and Silver Metallic.

Beauville interior in Blue Custom Cloth.

Tires supplied by various manufacturers.

NOTHING WORKS LIKE A CHEVY TRUCK



Important Note:

Since the time of printing, some of the information you will find here may have been updated. Also, some of the equipment shown or described throughout this catalog is available at extra cost.

The right is reserved to make changes at any time, without notice, in prices, colors, materials, equipment, specifications and models. Check with your Chevrolet dealer for complete information.

A word about engines.

Chevrolet trucks are equipped with engines produced at facilities operated by GM car and truck groups, subsidiaries or affiliated companies worldwide.

A word about updated service information.

Chevrolet regularly sends its dealers useful service bulletins about Chevrolet products. Chevrolet monitors product performance in the field. We then prepare bulletins for servicing our products better. Now you can get these bulletins, too. Ask your dealer. To get ordering information, call toll-free 1-800-551-4123.

For information on any new Chevy truck.

See your Chevy dealer for a complete selection of 1985 truck catalogs. They cover • Chevy S-10 Blazer • full-size 4WD Blazer

S-10 PICKUP



S-10 PICKUP 4X4



S-10 BLAZER



S-10 BLAZER 4X4



S-10 MAXI CAB



EL CAMINO SPORT



EL CAMINO



FULL-SIZE BLAZER



SUBURBAN



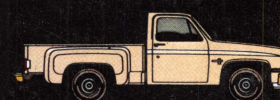
BIG DOOLEY



CREW CAB



STEPSIDE PICKUP



FLEETSIDE PICKUP



FLEETSIDE PICKUP 4X4



SPORTVAN



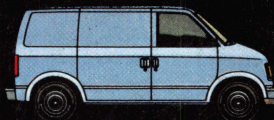
CHEVY VAN



ASTRO



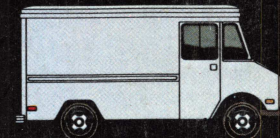
ASTRO VAN



HI-CUBE VAN



STEP-VAN



• Chevy S-10 Pickup • full-size Chevy Pickup • Suburban • El Camino • Sportvan • Chevy Van • Astro Passenger Van • Astro Cargo Van • Step-Van • all Medium-Duty Chevs and

the • Chevy Recreation & Trailering Guide.

Let's get it together

... buckle up.

Every new 1985 light-duty Chevy truck delivered by a

Chevrolet dealer in the United States comes with a one-year, \$10,000 seat belt insurance certificate from MIC General Insurance Corporation at no additional charge. \$10,000 will

be paid to the estate of any occupant who suffers fatal injuries as a result of an accident involving that vehicle while wearing a GM seat belt. Buckle up every time you drive.